



TCR/R

CJTCR/R

# TCR/R CJTCR/R

## 400° C/2h Centrifugal fans

### Construction characteristics

#### TCR/R

- Series with LGAI certification, in accordance with the EN 12101-3 European Standard.
- TCR/R series centrifugal fans permit AIR ASPIRATION up to 400°C/2h and 600°C/1h  
Maximum exterior temperature 70°C.
- 50 Hz three-phase motors, IP-55 protection. Class F insulation. Certified to IEC 34.1 (UNE 20113), VDE 0530 standards.
- Housing and turbine made of rolled steel.
- Corrosion-proof finish in polyester resin, polymerised at 180°C, after degreasing, phosphating and passivation pre-treatment.  
Turbine finished in heat-resistant paint.
- Max. air-flow temperature: 250°C continuous functioning.
- On request:
  - Fans with motors for temperatures up to 200°C/2 h.
  - Fans with two-speed motor.
  - Belt-driven fans.

#### CJTCR/R

- Ventilation box with thermal and acoustic insulation, with LGAI certification in accordance with European norm EN-12101-3.
- TCR/R series CENTRIFUGAL fan, with LGAI certification, in accordance with European regulation EN-12101-3.



### Technical characteristics

Model	Velocity (r/min)	Max. admissible current (A)			Absorbed power free disc. (W)	Max. airflow (m3/h)	Sound level pressure dB(A)		Approx. weight Kg.		
		230V	400V	690V			TCR/R	CJTCR/R	TCR/R	CJTCR/R	
TCR/R-1240-2T	CJTCR/R-1240-2T	2895	13,51	7,80	4,00	11100	86	81	93,5	147,5	
TCR/R-1240-4T	CJTCR/R-1240-4T	1455	3,22	1,86	0,75	5800	71	66	70,5	124,5	
TCR/R-1445-2T	CJTCR/R-1445-2T	2915		13,90	8,00	7,50	16500	87	82	126,0	210,0
TCR/R-1445-4T	CJTCR/R-1445-4T	1460	4,42	2,55	1,10	8030	72	67	92,5	176,5	
TCR/R-1650-4T	CJTCR/R-1650-4T	1440	5,89	3,40	1,50	10500	74	68	114,0	189,0	
TCR/R-1650-6T	CJTCR/R-1650-6T	970	3,91	2,26	0,75	7410	64	59	114,0	189,0	
TCR/R-1856-4T	CJTCR/R-1856-4T	1455	11,09	6,40	3,00	15150	79	74	152,0	273,0	
TCR/R-1856-6T	CJTCR/R-1856-6T	965	5,04	2,90	1,10	10050	70	65	146,5	267,5	
TCR/R-2063-4T	CJTCR/R-2063-4T	1460		11,40	6,60	5,50	24450	80	75	226,0	381,0
TCR/R-2063-6T	CJTCR/R-2063-6T	935	7,48	4,30	1,50	16100	71	66	208,5	363,5	
TCR/R-2271-4T	CJTCR/R-2271-4T	1465		21,50	12,40	11,00	34610	85	79	315,0	508,0
TCR/R-2271-6T	CJTCR/R-2271-6T	950	12,20	6,82	3,00	22750	76	71	293,5	486,5	





# TCR/R CJTCR/R

## Acoustic characteristics

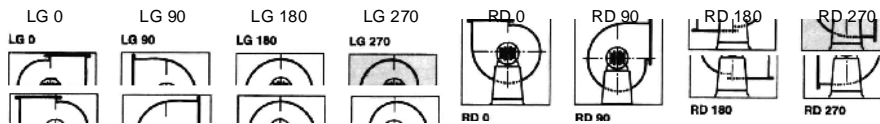
The values shown are calculated using free-field sound pressure levels in dB (A), at a distance equivalent to twice the fan span plus the impeller diameter, with a minimum of 1.5 m.

Sound power spectrum Lw(A) in dB(A) by frequency band in Hz.

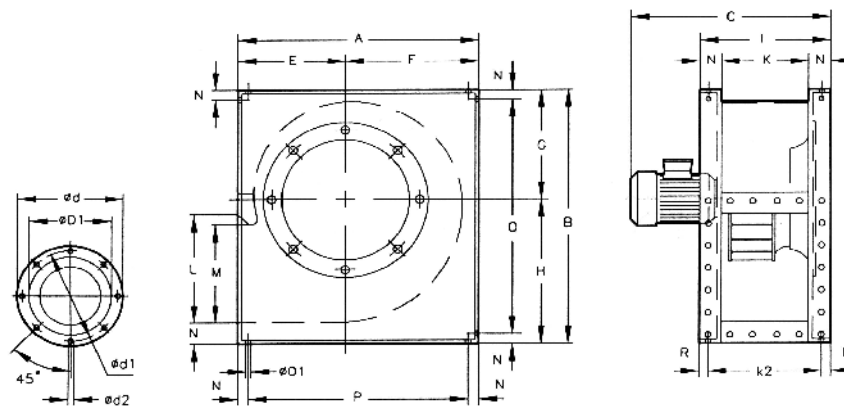
Model	63	125	250	500	1000	2000	4000	8000	Model	63	125	250	500	1000	2000	4000	8000	
<b>TCR/R</b>									<b>CJTCR/R</b>									
1240-2	68	83	81	93	90	94	96	83	1240-2	63	78	76	88	85	89	91	78	
1240-4	56	40	76	79	79	80	70	59	1240-4	51	65	71	74	74	75	65	54	
1445-2	73	85	83	95	93	97	99	89	1445-2	68	80	78	90	88	92	94	84	
1445-4	59	72	78	83	80	83	78	64	1445-4	54	67	73	78	75	78	73	59	
1650-4	64	74	82	84	83	85	76	66	1650-4	58	68	76	78	77	79	70	60	
1650-6	53	65	72	77	73	69	62	54	1650-6	48	60	67	72	68	64	57	49	
1856-4	69	78	91	87	90	91	85	71	1856-4	64	73	86	82	85	86	80	66	
1856-6	61	69	81	83	80	81	71	60	1856-6	56	64	76	78	75	76	66	55	
2063-4	80	85	91	93	91	88	81	73	2063-4	75	80	86	88	86	83	76	68	
2063-6	69	70	82	82	81	83	73	63	2063-6	64	65	77	77	76	78	68	58	
2271-4	83	84	93	96	98	99	95	82	2271-4	77	78	87	90	92	93	89	76	
2271-6	73	73	87	86	90	90	79	68	2271-6	68	68	82	81	85	85	74	63	

## Orientation

Standard LG 270 supply



## Dimensions mm



Model	A	B	C	ØD1*	Ød	Ød1	Ød2	E	F	G	H	M	N	ØO1	P	Q	R
1240-2T	673	790	765	400	472	444	M.8	305	368	310	480	358	40	11	593	710	20
1240-4T	673	790	625	400	472	444	M.8	305	368	310	480	358	40	11	593	710	20
1445-2T	765	880	845	450	522	494	M.8	350	415	339	541	404	45	11	675	800	20
1445-4T	765	880	684	450	522	494	M.8	350	415	339	541	404	45	11	675	800	20
1650-4T	832	970	750	500	582	555	M.10	375	457	378	592	445	45	13	742	890	20
1650-6T	832	970	730	500	582	555	M.10	375	457	378	592	445	45	13	742	890	20
1856-4T	925	1084	866	560	645	615	M.10	415	510	426	658	493	50	13	825	984	25
1856-6T	925	1084	805	560	645	615	M.10	415	510	426	658	493	50	13	825	984	25
2063-4T	1037	1218	1007	630	720	688	M.10	465	572	477	741	530	60	13	917	1098	30
2063-6T	1037	1218	927	630	720	688	M.10	465	572	477	741	530	60	13	917	1098	30
2271-4T	1173	1375	1176	710	800	768	M.12	525	648	538	837	603	65	13	1043	1245	32.5
2271-6T	1173	1375	1073	710	800	768	M.12	525	648	538	837	603	65	13	1043	1245	32.5

\* Recommended nominal tube diameter

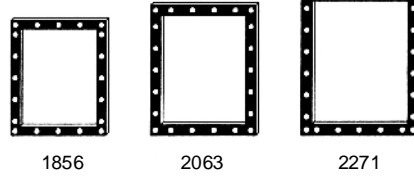
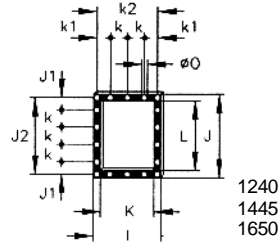




# TCR/R CJTCR/R

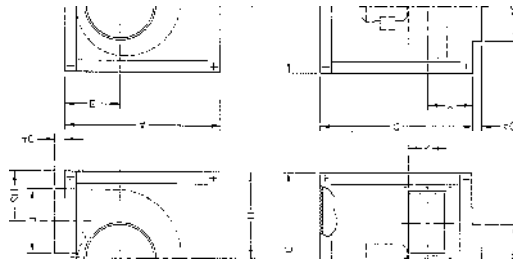
Dimensions mm

Outlet opening



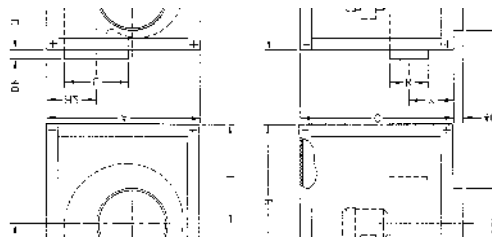
Model	I	J	J1	J2	K	k	k1	k2	L	ØO
1240	395	480	70	440	315	100	77.5	355	400	11
1445	445	540	99	498	355	100	102.5	405	450	11
1650	490	590	87.5	550	400	125	100	450	500	13
1856	550	660	55	610	450	125	125	500	560	13
2063	620	750	95	690	500	125	92.5	560	630	13
2271	690	840	75	775	560	125	62.5	625	710	13

LG 270



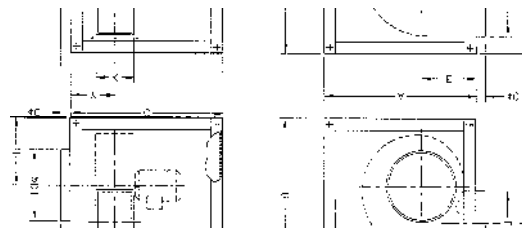
Model	A	B	C	ØD1	E	H	H2	K	L	Y
CJTCCR/R-1240	970	970	970	400	312	549	308	315	400	307.5
CJTCCR/R-1445	1070	1070	1070	450	357	610	339	355	450	333.5
CJTCCR/R-1650	1160	1160	1160	500	382	660	365	400	500	355
CJTCCR/R-1856	1260	1260	1050	560	422	727	399	450	560	360
CJTCCR/R-2063	1400	1400	1200	630	472	810	444	500	630	395
CJTCCR/R-2271	1555	1555	1355	710	532	906	489	560	715	430

LG 0



Model	A	B	C	ØD1	E	H	H2	K	L	Y
CJTCCR/R-1240	970	970	970	400	533	437	322	315	400	307.5
CJTCCR/R-1445	1070	1070	1070	450	586	484	367	355	450	333.5
CJTCCR/R-1650	1160	1160	1160	500	634.5	525.5	391.5	400	500	355
CJTCCR/R-1856	1260	1260	1050	560	681.5	578.5	442.5	450	560	360
CJTCCR/R-2063	1400	1400	1200	630	759	641	482	500	630	395
CJTCCR/R-2271	1555	1555	1355	710	838	717	518.5	560	715	430

LG 90



Model	A	B	C	ØD1	E	H	H2	K	L	Y
CJTCCR/R-1240	970	970	970	400	312	379	350	315	400	307.5
CJTCCR/R-1445	1070	1070	1070	450	357	408	391	355	450	333.5
CJTCCR/R-1650	1160	1160	1160	500	382	447	419	400	500	355
CJTCCR/R-1856	1260	1260	1050	560	422	495	438	450	560	360
CJTCCR/R-2063	1400	1400	1200	630	472	546	488	500	630	395
CJTCCR/R-2271	1555	1555	1355	710	532	607	532	560	715	430

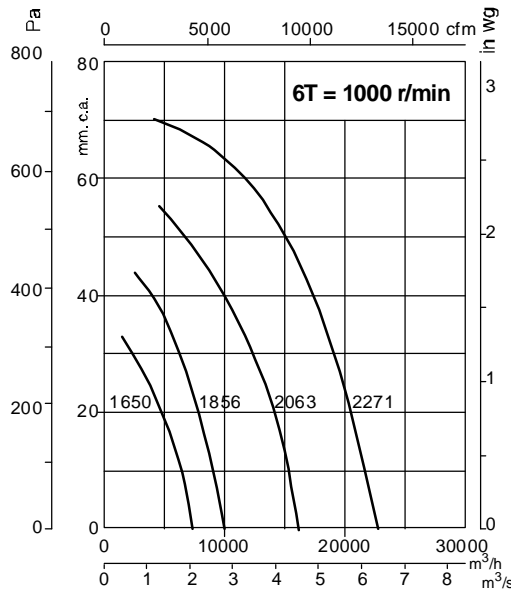
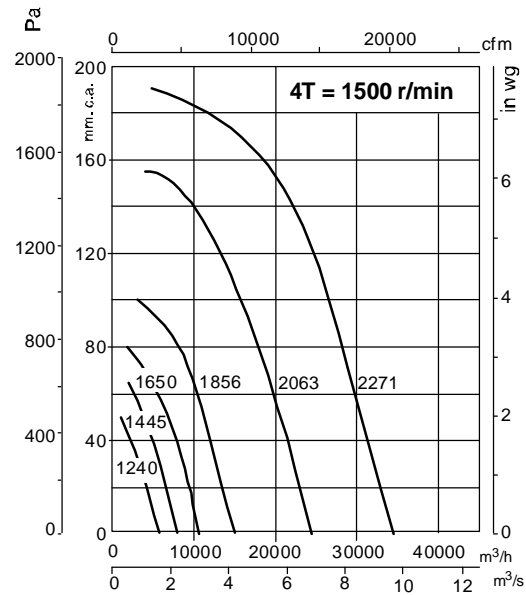
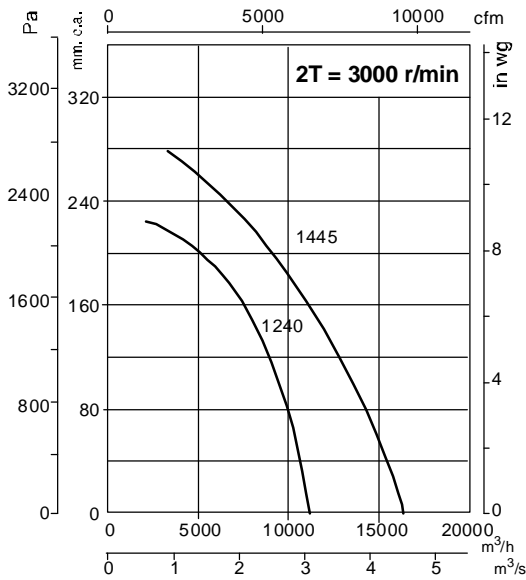




# TCR/R CJTCR/R

## Characteristics Curves

Q = Airflow in m<sup>3</sup>/h. and m<sup>3</sup>/s.  
Pe = Static pressure in mm.c.a. and Pa.



## Accessories

See pages 248 onwards.

